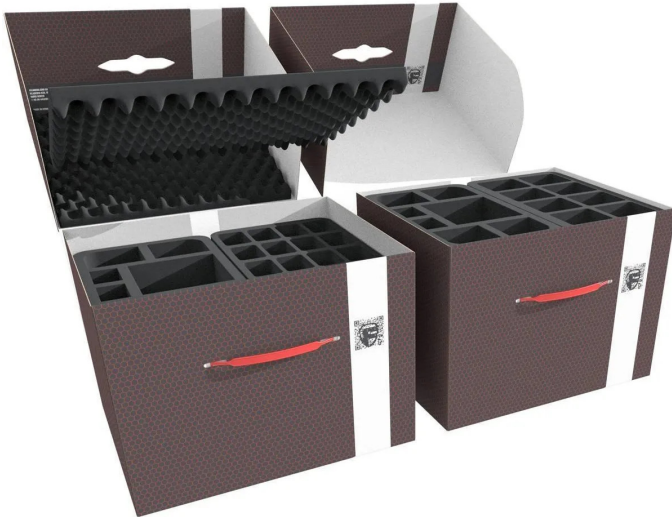


Item no.: 377336

## FSLB250P18 - Storage Boxes FSLB250 Bundle for Altar Quest - Base Game + Stretch Goals

from **95,86 EUR**

Item no.: 377336  
shipping weight: 2.00 kg  
Manufacturer: Feldherr



### Product Description

The ruins of a forgotten land await you in Altar Quest. Treasures and monsters pave your path and countless miniatures need to be stowed away. We have designed the matching storage box bundle so that you don't lose track of all the miniatures, terrain pieces and accessories. All the contents of the base game and the stretch goals from the Altar Quest Kickstarter campaign can be stored safely and neatly here. The set offers space for all miniatures, playing cards and all accessories from the "Altar Quest" base game and all unlocked stretch goals from the Kickstarter campaign. One storage box each for the base game and stretch goals. All game cards also fit with protective sleeves. You can store the rules, story guide and game boards separately in the storage boxes. All miniatures and the entire game material are well protected and clearly organised in two storage boxes with a total of 14 foam inserts. One box is for storing the base game, the other offers enough space for the stretch goals from the Kickstarter campaign. From simple minions to giant bosses, from heroes to villains, from book cases to the Altar of Greed - every enemy model, every hero, every character and every terrain piece has its own customised compartment. Surrounded by soft, fine-pored foam, your figures are optimally protected during transport. You don't have to worry about scratches and chipped paint on your painted figures or broken parts of your miniatures. Individual inserts with special compartments for cards, card dividers, plastic rings, dice and tokens help you organise your game material. This saves you time when setting up the game and ensures that nothing stands in the way of a quick game. Of course, all playing cards also fit into the inserts with protective sleeves. Finally, three foam lids ensure that your figures are securely packed all round. You can store the rules, story guide and game boards separately on the foam lids. The FSLB250 storage box is made of coated, double-wall cardboard and is therefore very light and also particularly stable. With the matching foam inserts, miniatures, game material and all other goods can be stored safely and protected from dust - and easily transported with the plastic carrying handle. One side of the box can be opened completely. This makes it easier to put away and remove the foam mats. The inserts are either inserted from the top or simply pushed into the side of the box.

Details- high quality, fine-pored foam - Made in Germany- chlorine-free and acid-free Suitable for- Altar Quest basic game box- Altar Quest Stretch Goal Box including the "Call of the Lunarin" expansion Content- 2 Feldherr storage boxes FSLB250 2 Feldherr storage boxes FSLB250- 3 full-size foam inserts with 32 compartments each for miniatures (FSMEDS040BO)- 1 full-size foam insert with 50 compartments for miniatures (FSEB040BO)- 1 full-size foam inlay with 13 compartments for cards and tokens (FSLG050BO)- 2 half-size foam inlays with 16 compartments each for miniatures (HS035BF05BO)- 1 half-size foam inlay with 8 compartments for large miniatures and terrain (HS070BF02BO)- 2 half-size foam inlays with 7 compartments each for card dividers, Plastic Rings, large miniatures and terrain (HSMEME070BO)- 4 half-size foam inserts, each with 7 compartments for cards, heroes and terrain (HSMEQO050BO)- 2 studded foam lids- 1 foam lid Dimensions- Storage box Internal dimensions: 345 mm x 275 mm x 250 mm height- Storage box external dimensions: 355 mm x 290 mm x 260 mm height Inlays- HS035BF05BO: 275 mm x 172 mm x 35 mm total height (25 mm usable height + 10 mm foam base)- HS070BF02BO: 275 mm x 172 mm x 70 mm total height (60 mm usable height + 10 mm foam base)- HSMEME070BO: 275 mm x 172 mm x 70 mm total height (60 mm usable height + 10 mm foam base)- HSMEQO050BO: 275 mm x 172 mm x 50 mm total height (40 mm usable height + 10 mm foam base)- FSMEDS040BO: 345 mm x 275 mm x 40 mm total height (30 mm usable height + 10 mm foam base)- FSLG050BO: 345 mm x 275 mm x 50 mm total height (40 mm usable height + 10 mm foam base)- FSEB040BO: 345 mm x 275 mm x 40 mm total height (30 mm usable height + 10 mm foam base)

### Specifications

Scan this QR code to view the product

All details, up-to-date prices and availability

