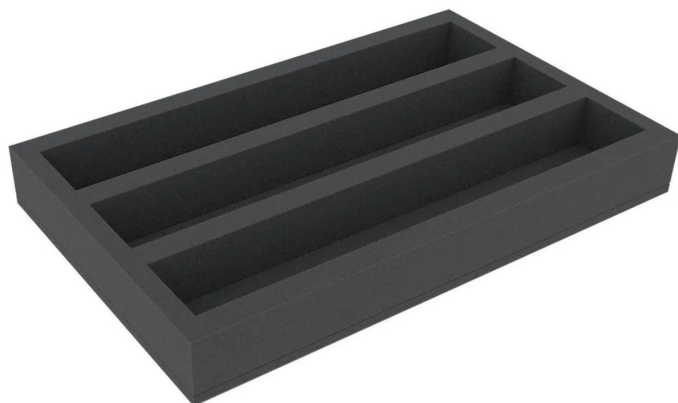


Item no.: 376384

DS065A003 - Foam insert for 1:50 scale model lorry - horizontal

from **22,02 EUR**

Item no.: 376384
shipping weight: 0.10 kg
Manufacturer: Feldherr



Product Description

Whether semitrailer truck, tractor unit and trailer, heavy goods vehicle or low-loader - with this Feldherr foam inlay you get a safe parking space for your 1:50 scale vehicles. The inlay has 3 compartments in which you can store your models neatly and clearly. The models are stored horizontally. This means that the inlay can also be used as a display for presenting your own lorry collection. The fine-pored foam reliably protects your fleet from damage - the paintwork is spared from scratches and sensitive parts such as mirrors remain intact during transport.

Details- Made in Germany- chlorine-free and acid-free
Technical details- Dimensions: 345 mm x 275 mm x 50 mm- 8 compartments is 122 mm long x 74 mm wide x 40 mm deep
Material- high-quality, fine-pored foam

Specifications

Scan this QR code to
view the product
All details, up-to-date
prices and availability

