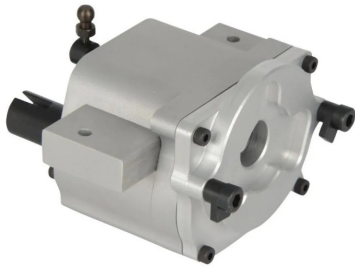


Item no.: 369424

500907265 - Model part,1:14 Aluminium 2-speed gearbox Compact

from **168,61 EUR**

Item no.: 369424
shipping weight: 0.20 kg
Manufacturer: Carson



Product Description

The CARSON drive concept for 1:14 scale TAMIYA® trucks Convert your 2- or 3-axle TAMIYA tractor to an all-wheel drive all-rounder with our self-locking axles. The components are easy to replace as they attach to the existing mounting points. A huge advantage of these axles is that no further space is required for a switching servo (linkages and Bowden cables), as these lock automatically in the event of a loss of traction. Officially licensed by ZF Friedrichshafen AG.

You decide how to convert your 2- or 3-axle tractor, this is possible in two stages:

Configuration options for:

2-axle tractors: Mercedes-Benz Actros Gigaspace 1845, MAN TGX 18.540, SCANIA R470, VOLVO FH12, Mercedes-Benz 1838LS, Mercedes-Benz 1850

1, 4x2 rear axle drive (with self-locking differential)- TAMIYA® 3-speed manual transmission (kit) with a CARSON rear axle (self-locking)

2, 4x4 4-wheel drive with 2+2 speed gearbox(front axle/rear axle/distribution gearbox self-locking)- CARSON 2-speed manual gearbox Compact in combination with CARSON 2-speed distribution gearbox Torque compensation (self-locking), driven front axle (self-locking), rear axle (self-locking), drive shaft set 4x4.

3-axle tractor: Mercedes-Benz Actros 3363, MAN TGX 26.540, SCANIA R620)

1, 6x4 rear axle drive (with self-locking differential)- TAMIYA® 3-speed manual gearbox (kit) with two CARSON rear axles (self-locking), drive shaft set 6x4.

2, 6x6 4-wheel drive with 2+2 speed gearbox(front axle/rear axle/distribution gearbox self-locking)- CARSON 2-speed gearbox Compact in combination with CARSON 2-speed transfer gearbox Torque compensation (self-locking), driven front axle (self-locking), two rear axles (self-locking), drive shaft set 6x6.

CARSON 2-speed gearbox Compact (without engine)

This compact 2-speed gearbox is designed for use in TAMIYA 2- and 3-axle chassis in conjunction with the 2-speed transfer case. It offers you the possibility to convert or upgrade your model to all-wheel drive. It impresses with its simple installation, as existing holes/threads are used here. The small design allows the installation of the driven front axle (500907267 - front axle installation kit 500907280 is required.) .

- Compact 2-speed manual gearbox
- 2 gears: transmission ratio 1:11.3 (1st gear) and 1:5.666(2nd gear)
- 5-fold ball bearings
- CNC machined aluminium housing
- Hardened steel gears
- Incl. aluminium motor mount for 540 motors(Suitable for CARSON and TAMIYA standard and truck motors)
- Easy mounting by using existing holes (2 screws) on the ladder frame
- 5 mm gearbox/output shaft
- The gears are shifted by a micro-servo
- Shift servo and 540 motor are not included
- The gear ratios of this 2-speed manual gearbox and the 2-speed shiftable transfer case with torque compensation (1st gear 1:33.96, 2nd gear 1:16.98, 3rd gear 1:11.3, 4th gear 1:5.66) have been perfectly matched to each other

Not suitable for children under 3 years. Choking hazard due to small parts.

- Age recommendation: from 14 years
- Dimensions gearbox (without motor) LxWxH: 47 x 62 x 35 mm
- Weight (without motor) approx. 165 g
- Incl. motor pinion (3,17mm) and fixing material

Specifications

**Scan this QR code to
view the product**
All details, up-to-date
prices and availability



