

FS-ISTv2 insert compatible with Istanbul[®],

incl. the Mocha & Baksheesh[®] and Letters & Seals[®] expansions

Insert compatible with either the Big Box game variant, or the regular sized game box

Assembly Instructions

The package contains 6 sheets, three of them are identical to the other three.

The parts marked in sheets A2, B2, C2 are to be discarded.

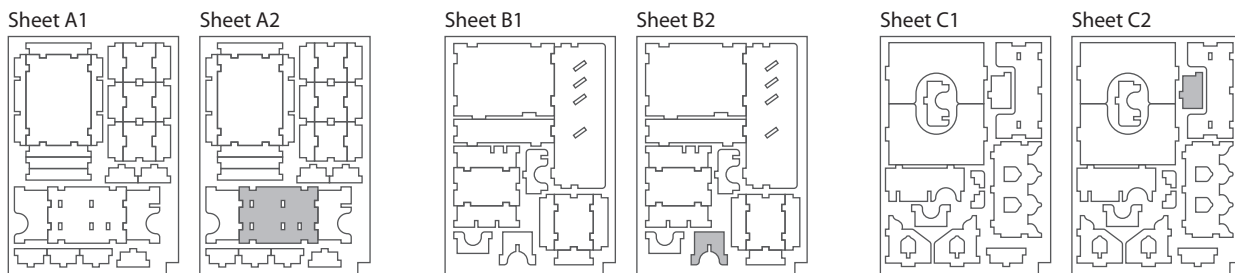
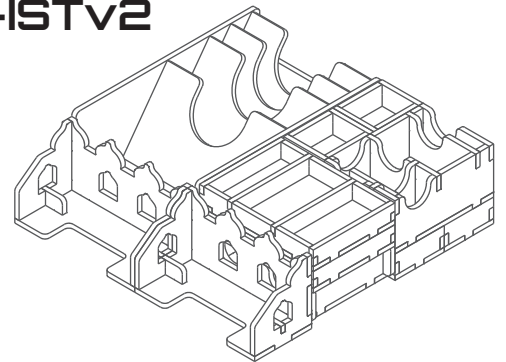
After assembly the trays are put in three layers in the original game box.

Ordinary PVA glue is required when assembling each tray.

Please make sure you dry-assemble each tray correctly before gluing it together.

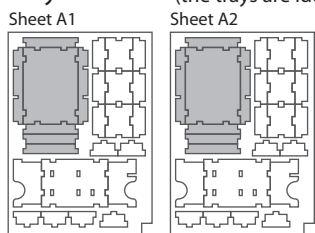
Please check www.foldedspace.net for general assembly tips.

FS-ISTv2

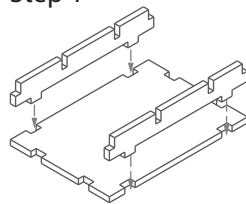


Tray 1a & 1b

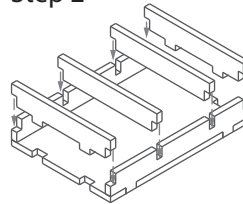
(the trays are identical)



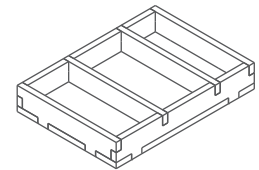
Step 1



Step 2

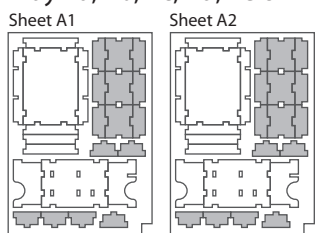


Finished tray



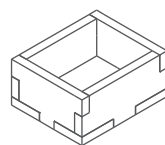
Tray 2a, 2b, 2c, 2d, 2e & 2f

(the trays are identical)



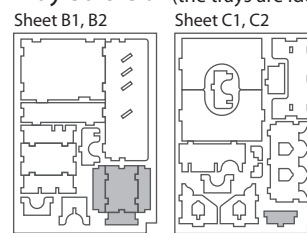
To assemble repeat steps of Tray 1a-b.

Finished tray



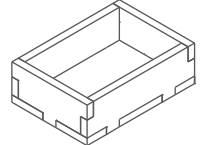
Tray 3a & 3b

(the trays are identical)

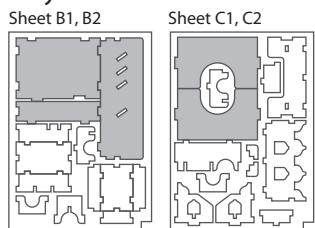


To assemble repeat steps of Tray 1a-b.

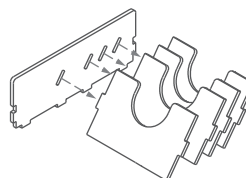
Finished tray



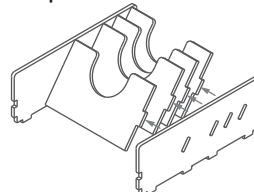
Tray 4



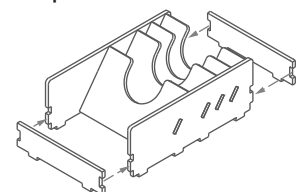
Step 1



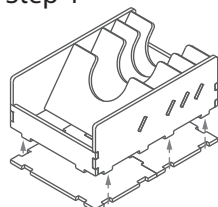
Step 2



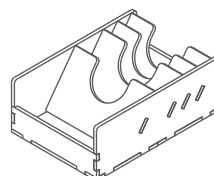
Step 3



Step 4



Finished tray



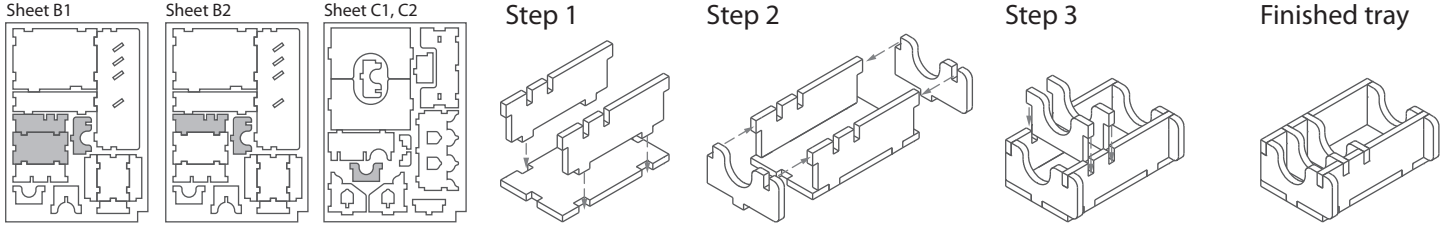
FS-ISTv2 insert compatible with Istanbul®,

incl. the Mocha & Baksheesh® and Letters & Seals® expansions

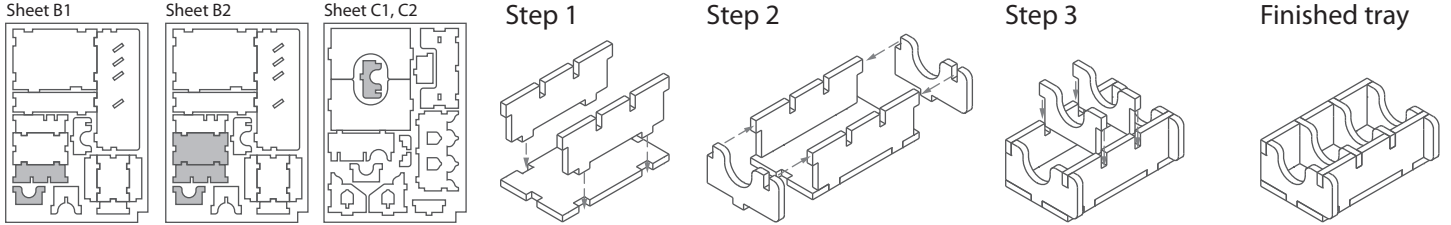
Insert compatible with either the Big Box game variant, or the regular sized game box



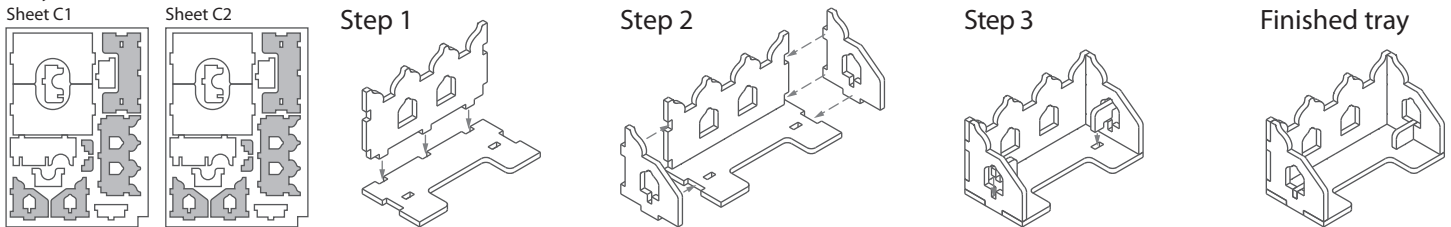
Tray 5a



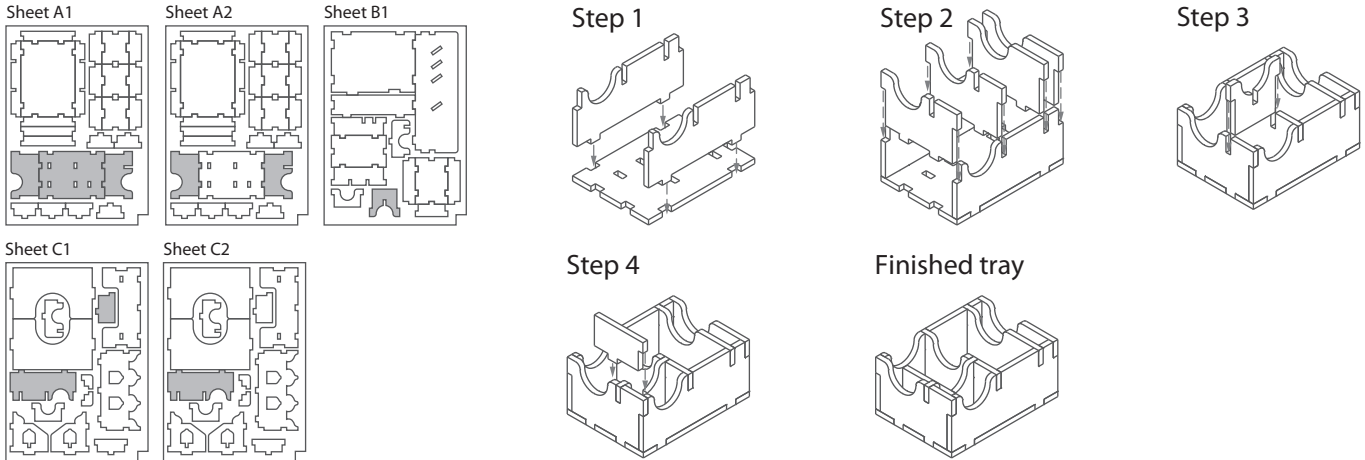
Tray 5b



Tray 6a & 6b (the trays are identical)



Tray 7



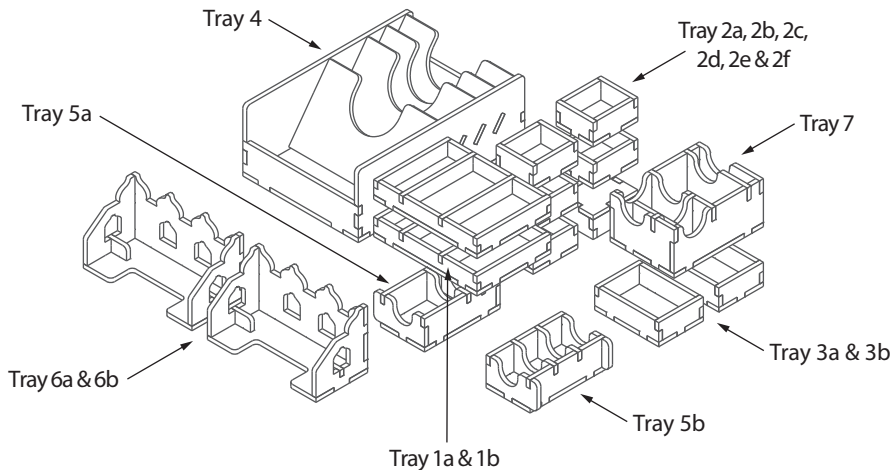
FS-ISTv2

Please check www.foldedspace.net for photos of this insert in use.

Tray legend:

- Tray 1a - coffee, rubies and governor, smuggler, coffee trader, courier & mail indicators
- Tray 1b - coin tokens
- Tray 2a, b, c, d, e, f - player pieces
- Tray 3a - wheelbarrow extensions
- Tray 3b - dice, barrier, and caravan & other tiles
- Tray 4 - places, wheelbarrows and overviews
- Tray 5a - kiosk and demand tiles
- Tray 5b - letter tiles
- Tray 6a, b - filler trays for Big Box variant
- Tray 7 - cards and mosque & tavern tiles

Note: when used in the regular sized box trays 6a & 6b are not needed. Also there will be 12 mm of lid lift when used with the regular box.



Tip: Keep the instructions in the bottom of your board game box as a reminder of how the insert fits together.